



Bloodworks

Northwest

We're all connected by blood



2015 Community Update

Mission

Saving lives through research, innovation, education and excellence in blood, medical and laboratory services in partnership with our community.

Board of Trustees

Glenn Wisegarver, Chair
Moz

Holli Harris
HadleyStilwell

Meredith Mathews, MD,
Vice Chair
Retired Healthcare Executive

Mohit Kathuria
Microsoft

David H. Kosloff
Adobe Healthcare

Wendy Apland
PeaceHealth

W. Conrad Liles, MD, PhD
University of Washington

James P. AuBuchon, MD
Bloodworks Northwest

Jim Palmeri
Agitare Technologies

Bill Baldwin
The Partners Group

Nancy Osborne Sclater
Pinkerton Brown, LLC

Katerie Chapman
Virginia Mason

Sean W. Sigmon
Oracle

Annette E. Clark, MD, JD
Seattle University School of Law

Craig M. Trewet
The Boeing Company

Pat Force
Northwest Community Credit Union

Phyllis T. Turner-Brim, Esq.
Intellectual Ventures

Carla Fowler, MD, PhD
THAXA

Bob Wallace
Wallace Properties

Bill Hammond, MD
Minor & James Medical

Executives

James P. AuBuchon, MD
President and CEO

Linda S. Barnes
Chief Operating Officer

Robert J. Gleason
Chief Financial Officer

José A. López, MD
Chief Scientific Officer

Christine Donatelli
Chief Quality Officer

Yanyun Wu, MD, PhD
Chief Medical Officer

Blood Works for Communities

As the Northwest's leading network of excellence for all things blood-related, we're passionate about the many, complex ways blood works to sustain our health and wellness. Our hearts pump it. Our lungs provide it with oxygen. Our kidneys filter it, and our liver removes its toxins. When we have a virus or disease, it's most often detected by analyzing our blood. When we take medicine, our blood usually delivers it where it needs to go.

Founded in 1944 as King County Central Blood Bank, from 1974 to early 2015 we were known as Puget Sound Blood Center. Today, we are Bloodworks Northwest. We've grown far beyond our Seattle roots—chosen to support 90 hospitals in Washington, Oregon and Alaska. Our comprehensive services run from arm-to-arm—from donor to patient, we're involved all along the way. We partner with local hospitals to deliver the highest level of patient care.

Other things haven't changed. We're local, independent, non-profit and community based. Blood we collect locally is used to support patients in our communities. We still depend on volunteer donors.

We count on businesses, service clubs, schools and faith communities to sponsor our blood drives. We rely on financial donations to support our mission. The remarkable impact we have is because of you. Working together, we save lives every day.

Research sets us apart. We are advancing medical science in four ways. First, by making transfusions safer for patients receiving them. We've also identified ways to make blood components last longer, so they can benefit more people. We're exploring new approaches to treat and cure bleeding disorders. And we are the only research lab in the Northwest seeking breakthroughs to prevent thrombosis – unwanted clotting that causes heart attacks and strokes.

Please take a few minutes to read the stories in this report. They offer a firsthand look at the impact of your gifts on patients, families and the community where you live.

Blood works miracles every day, and you make it possible.



Dr. James P. AuBuchon, MD, FCAP, FRCP (Edin)
President and CEO



Glenn Wisegarver
Chair, Board of Trustees

Northwest-Based. Influence and Impact Worldwide.



Many people recognize the lifesaving work Bloodworks Northwest does collecting, testing and processing blood to meet the needs of local patients. But that's only part of the story about how your community resource is connecting people all over the world. BloodworksNW is considered nationally and internationally as a center of excellence in all things blood related. We focus on saving lives through research, innovation, education and excellence in blood, medical and laboratory services to better the lives of everyone around us—locally and globally.

- BloodworksNW hosted an international delegation of blood specialists from Kazakhstan visiting the U.S. for the first time. They came to learn how to apply the concepts of quality management practices to their own blood and transfusion services.
- Some countries in Africa, like many developing regions of the world, have challenging healthcare issues: pediatric malaria, infectious diseases, and higher maternal and child mortality rates. While BloodworksNW can't solve all those problems, we are taking steps to improve blood storage and testing in Uganda, Kenya, and Ghana. Our own Linda Barnes and Dr. Meghan Delaney organized a transfusion therapy conference to build capacity and capabilities with and among physicians, nurses, and technologists in sub-Saharan Africa.
- China has an acute need for physicians and medical specialists trained in transfusion medicine. Most healthcare providers receive only a few hours of training in transfusion medicine during medical school. Led by Dr. Yanyun Wu, BloodworksNW is partnering with Yale University to give real-time, interactive lectures through an online training platform to more than 40 medical and graduate students and physicians in China.
- BloodworksNW's Dr. Jill Johnsen and UW collaborator Dr. Dan Ratner received a \$250,000 Life Sciences Discovery Fund award to further develop rapid-test blood typing using silicon chip technology. This innovation will allow doctors to quickly perform multiple tests immediately, at lower cost—and to do it either in lab or at a patient's bedside anywhere in the world.
- Since they were infants, Cheryl D'Ambrosio's two stepdaughters have received care and treatment from the Washington Center for Bleeding Disorders at BloodworksNW for a condition known as severe factor V deficiency. Blood donors made it possible for the girls to receive fresh frozen plasma transfusions whenever they were needed to treat serious joint bleeds. The result: Cheryl helped raise two beautiful young women who are now making their way in the world. Her family's experience led Cheryl to volunteer with the Hemophilia Federation of India to support better communications, understanding and programs for underserved girls and women with bleeding disorders.

Financial Summary

Audited financial statements are available online at BloodworksNW.org/connected

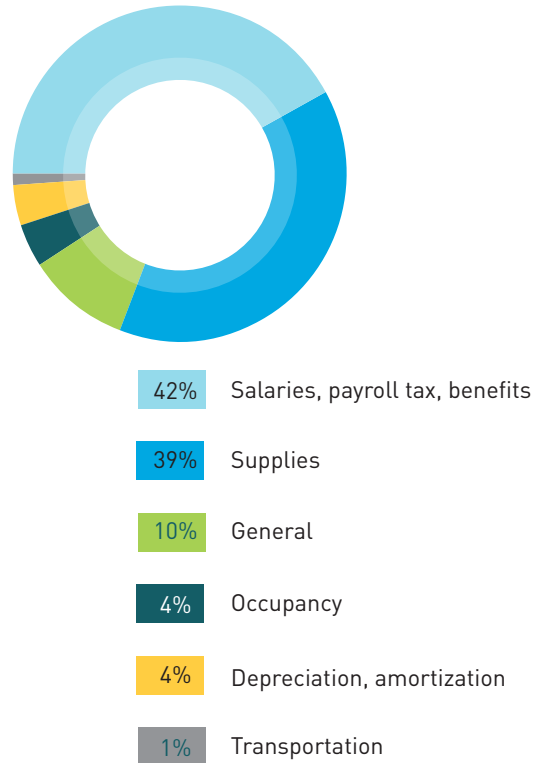
Expenses by Category

Salaries, payroll taxes and employee benefits	\$70,045,237
Supplies	65,262,236
General	16,984,953
Occupancy	6,487,535
Depreciation and amortization	6,018,771
Transportation	2,377,406
	<hr/>
	\$167,176,138

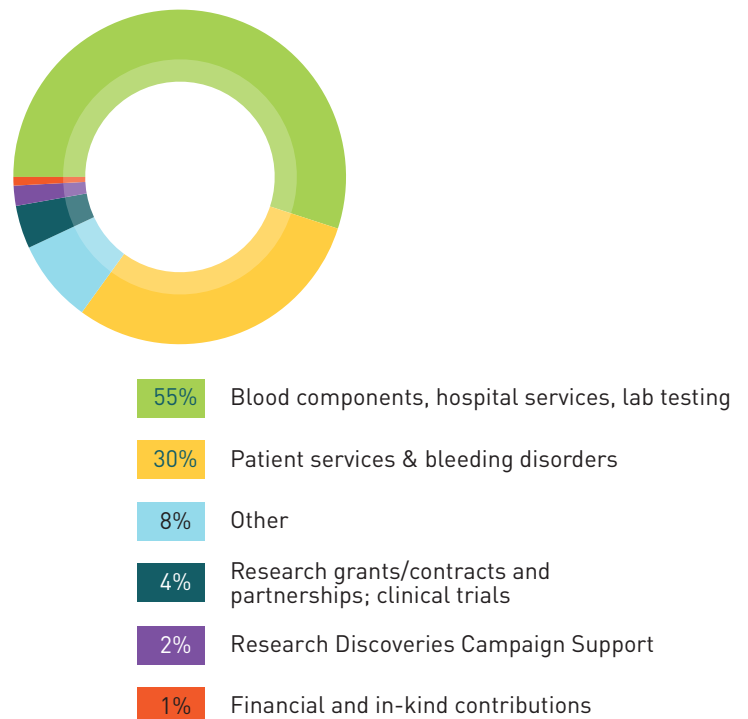
Revenue by Category

Blood components, services	\$96,151,684
Patient services & bleeding disorders	51,765,576
Research grants & contracts	7,593,529
Other income	14,991,353
Financial contributions	1,305,431
	<hr/>
	\$171,807,573
Research Campaign Support	\$3,100,000

Expenses Fiscal Year 2015



Revenue Fiscal Year 2015



Fiscal year 2015 numbers are preliminary and unaudited.

Lifesaving Gifts

July 1, 2014 to June 30, 2015



214,345

Blood Donors Registered

159,654	Whole Blood
28,526	Platelets – apheresis
6,261	Plasma – apheresis
2,845	Double Red Cells
26,672	First Time Donors

Marrow Donor Program

2,009	New marrow donor registrants
47	Marrow or stem cell donors

Cord Blood Program

5,717	Collections (WA, HI, OR)
865	Units banked from those collections
63	Units distributed for transplantation

Top Donor Groups Sponsoring Blood Drives*

Boeing	Swedish Medical Centers	Union Station
University of Washington	One and Two Union Square	Northshore Faith Alliance
Microsoft	Seattle University	Premera Blue Cross
Western Washington University	Legacy Health	San Juan Island Blood Drive
Seattle Municipal Tower	T-Mobile	Monroe Community
South Lake Union Community	King Street Center	Seattle Pacific University
Costco	Group Health Cooperative	Oak Harbor Lions
Seattle Children's Hospital	PeaceHealth Medical Systems	Washington Department of Ecology
AT&T	Providence Health & Services	
Westwood Village Shopping Center	Wal-Mart Oak Harbor	

Volunteer Program

2,048	Volunteers
112,010	Volunteer hours
938	New Volunteers

Blood Drive Donor Group Program

4,378	Blood Drives
169	New Blood Drive Donor Groups
1,289	Total Blood Drive Donor Groups

Blood Components Produced

161,139	Red Cells (includes 2,845 double red cells)
49,392	Whole Blood – Platelets
28,586	Apheresis – Platelets

*Based on total number of donors registered annually.

Blood Services: Circulating Locally



It takes an average of 800 donors a day for every day of the year to meet the needs of patients we serve in 90 hospitals throughout the Pacific Northwest. Our service region spans from Bellingham, Washington to Medford, Oregon and just about every city west of the Cascades that's in between.

Our Blood Services Team are the friendly people you meet when you come in to donate at one of our 12 donor centers or in 20 mobiles that collect blood at more than 4,300 drives a year. That amounts to more than 80 blood drives every week at neighborhood schools, community halls and places where you work or worship. And it takes 80 volunteers a day to support this process. Volunteers schedule donations, transport blood and supplies, greet and register donors, and care for and

monitor donors. After giving blood, donors relaxed with 279,750 cookies last year! And in case you're wondering, chocolate chip is the most-requested.

Immediately after a donation is received, blood begins a lifesaving journey as it makes its way to people facing cancer treatments, trauma care, surgeries, blood diseases, and organ transplants. Our Blood Services laboratories are staffed 24/7, working around the clock to process, test, and deliver blood to hospitals within 48 hours of donation.

All of this is only possible with the generous help and dedicated support of our donors, volunteers, and financial contributors to ensure a stable, safe community blood supply.



Mobile Platelet Donation Rolls out

When you donate whole blood, each unit is separated into three main components: red cells, platelets, and plasma. It takes between 10 to 15 whole blood donations to match the volume of platelets you can safely give in one single apheresis platelet donation. Apheresis platelet collections involve drawing blood, separating it into its component parts, retaining the platelets in a bag, then returning the other components back to the donor. It takes longer than a whole blood donation, but does a world of good.

Since platelets have a shelf life of only five days, a continuous, steady supply from donors is necessary for patients in our community whose care depends on them. This can only be achieved through volunteer platelet donors. Our new mobile platelet collection program now makes it easy to give at select mobile blood drives. The program allows us to bring our special platelet donation machine onsite to blood drives. For those donors who can't find a mobile location to donate, we still offer platelet donation at all of our donor centers.



October 2015 marked one year since Lane Blood Center in Eugene, Oregon became part of BloodworksNW. Together, we are both stronger. We have achieved many improvements, including

on-site irradiation at Lane to better serve local hospitals, along with FDA licensing for double apheresis platelets.

We are fundraising in Lane and Douglas counties for a new, state-of-the-art bloodmobile to increase our capacity for mobile collections, and to make it easier for donors to give closer to where they live, work or worship. Lane's reputation for providing an outstanding donor experience continues, along with their track record of excellence in serving patients and hospitals in Oregon. A solid foundation for a strong future!

Make a difference today at BloodworksNW.org/gifts



An Artist's Journey

Donor Profile

Glassblower Sterling Powell had just installed a glass exhibit outside PeaceHealth St. Joseph Medical Center in Bellingham. Two days later, he was diagnosed with squamous cell carcinoma, an aggressive form of mouth cancer. Four days after installing the glass exhibit, Sterling was inside of St. Joseph's undergoing his first session of chemotherapy.

Sterling recalls, "I went through chemotherapy and several weeks of radiation. It was hard. I almost didn't make it, but I did."

The constant nausea and physical side effects of the chemo were awful. But the worst part for Sterling was how it affected his art. He was completely exhausted from his illness and it was impossible to blow glass with a tube in his stomach.

The cancer compromised his immune system to the point where even a common cold became life-threatening. "I caught a fever during my treatment and had to spend days in the hospital hooked up to IVs." Fortunately, Sterling received plasma—recovering from the fever and eventually beating the cancer.

While many blood donors believe that their gifts help accident victims, about one-third of blood components actually go to people like Sterling, who have been diagnosed with cancer or other blood diseases. These components help patients recover from the effects of chemotherapy, radiation, or blood loss during surgery.

Sterling had given blood several times before his diagnosis. As a cancer patient, he was frustrated when he learned that Bloodworks Northwest needed type-O donors—his blood type—but he couldn't give soon after cancer treatment. "I couldn't donate because I hadn't been out of chemo long enough. As soon as I was able to donate I did, because I know now what it's like to be on the critical side of things!"

His first donation post treatment and recovery was a double red cell unit at the Bellingham Donor Center, which allowed him to give twice as many red cells—and make twice the impact—in one visit.

Sterling is thrilled to be back to glassblowing. "Cancer can be beat. You can make a comeback. It's not cancer that's in front of me now, but my life." An artist's journey: once donor, then grateful recipient, now dedicated donor again.



First in the Northwest

BloodworksNW created the first umbilical cord-blood program in the Pacific Northwest in 1997. Today we partner with 10 hospitals in Washington State, one in Oregon, and six hospitals in Hawaii. In 2015, we expanded our partnership to include healthcare providers at MultiCare Good Samaritan, Tacoma General Hospital and Auburn Medical Center to offer cord blood donation to mothers in the South Sound region for the first time. These growing partnerships hold the promise of saving more lives, raising awareness about cord blood donation and increasing the availability of stem cells for transplantation.

Cord Blood Program

Giving birth offers a unique chance to give life to others.

In 1998, Keri Heyting Kliemann's father was treated for multiple myeloma—a type of blood cancer—at the University of Washington Medical Center. Regular blood transfusions were an integral part of his treatment. Although he was a candidate for a stem cell transplant from his own bone marrow, Keri's dad passed away before he was able to complete this treatment.

Keri decided to honor her father's memory by donating the umbilical cord blood of her daughter, Kassie, born in 2006. Like bone marrow, umbilical cord blood contains stem cells that can help doctors treat myeloma, leukemia, and other cancers and immune disorders.

After cord blood is collected it is processed, "typed," tested, and entered into the national transplantation registry. The units are available to patients in need both in the U.S. and around the world.

Keri recalls, "Donating my daughter's cord blood gave me a sense of closure about my dad's passing. Though it couldn't help him, I knew Kassie's cord blood could

make a life-changing difference for someone else."

That's exactly what happened. In April 2010, Keri received a call from Bloodworks Northwest's Cord Blood Program: Kassie's cord blood was a match for a similar-age boy with leukemia. After hearing the news, Keri was overwhelmed with emotion.



Kassie isn't old enough to know how her cord blood donation had a lifesaving impact. But Keri plans to tell her when she can better understand. "She has an empathetic heart, and it will surely be meaningful to her," Keri says.

Unfortunately, despite its lifesaving potential, cord blood is often discarded. New moms don't know about the opportunity to donate. BloodworksNW is working hard to spread the word and to make the process available in all maternity wards. Donating cord blood: one new life, and another life saved. What could be more powerful than that?

Find out more at BloodworksNW.org/cordblood.

Cord Blood Program Partner Hospitals:

- EvergreenHealth Medical Center
- Madigan Army Medical Center
- MultiCare Auburn Medical Center
- MultiCare Good Samaritan Hospital
- MultiCare Health System - Tacoma General Hospital
- Oregon Health & Science University
- Overlake Medical Center
- Swedish Medical Center (Ballard, First Hill, & Issaquah campuses)
- UW Medicine / Northwest Hospital & Medical Center

Coming Soon:

- CHI Franciscan Health



Transfusion Medicine

Blood components just minutes away

Blood transfusions are the most frequently-performed medical procedure that people have during hospital stays. About five million Americans receive transfusions every year. Bloodworks Northwest's integrated transfusion services provide multiple options for hospitals, with an emphasis on quick and effective support for patient needs.

For example, patients and physicians at Seattle Children's, UW Valley Medical Center, and Swedish Cherry Hill, First Hill and Issaquah campuses all benefit from enhanced quality of care through on-site labs staffed by BloodworksNW specialists. This represents about 4,000 patient beds. The labs are full-service transfusion service labs with specialized staff available 24/7 to test and crossmatch patient blood samples with on-site blood components that are just steps away—all backed by our transfusion expertise, specialized physicians, and transfusion safety officers. On-site labs help hospitals get maximum value and service by reducing turnaround time. BloodworksNW is currently exploring the logistics of opening additional on-site

laboratories during 2016 at some hospitals that are currently served by our centralized transfusion service labs.

Another service model is our Remote Allocation Program, which provides some area hospitals with HemoSafe® blood dispensing units that allow immediate access to a full range of red cell types and plasma—all tested and transfusion-ready. These are “ultra-smart” refrigerators that can store up to 120 units of blood. They are digitally linked directly to BloodworksNW Transfusion Service labs, and backed up by sophisticated tracking and matching systems. That means it takes less than 10 minutes to assign specific units to patient in need. Over 15,000 units of blood are dispensed every year for patients at six hospitals using HemoSafes. In early 2016, BloodworksNW will install HemoSafes at two additional hospitals that are currently served by our centralized transfusion service labs, further extending our outreach from the blood center directly to the patient.

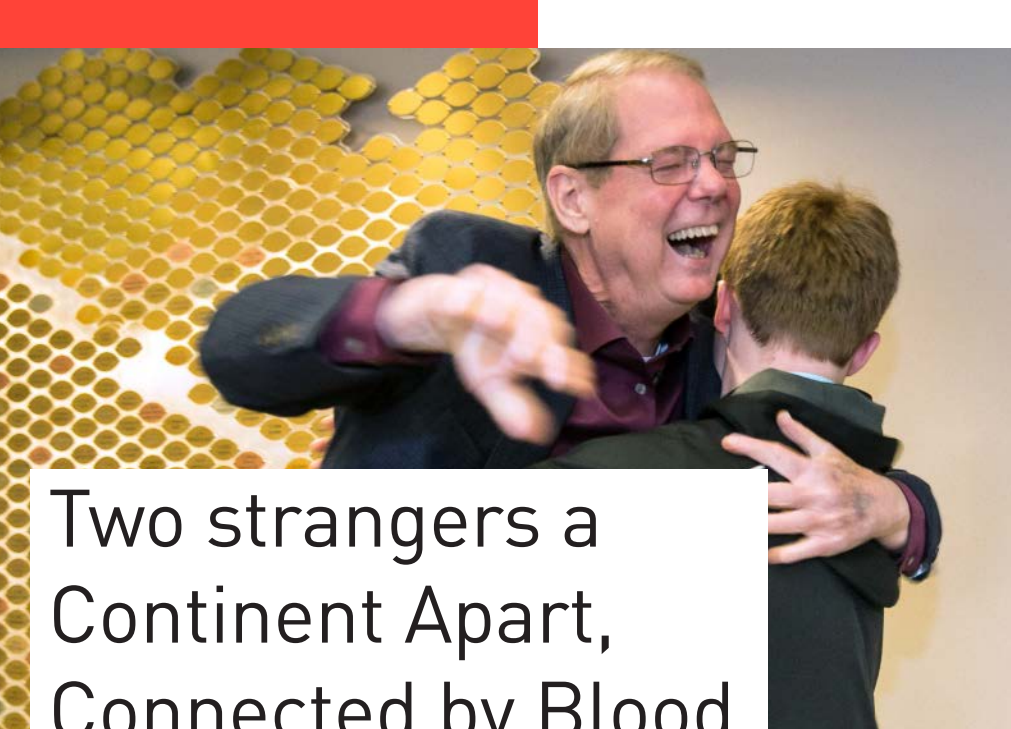
2015 Northwest Transfusion Service Symposium

BloodworksNW hosted the inaugural program of the Northwest Transfusion Service Symposium at UW Tacoma—offering day-long sessions and continuing medical education credit. The workshops, panels, and presentations designed for physicians, nurses, laboratorians, and blood bankers provided an array of topics from technical to professional experience and programs for enhanced patient care.

Testing Labs Supporting Organ Transplantation

Since 2011, the Donor Testing Lab has provided STAT infectious disease testing for more than 300 potential organ donors per year in a five state region: Washington, Oregon, Idaho, Montana, and Alaska. In 2015 this lab expanded these services to include regional Eye Banks and Tissue Banks in the same area, providing a common testing lab for the Organ,

Eye and Tissue banks in the region. In conjunction with the Immunogenetics lab, this has positioned Bloodworks as the premier transplantation testing laboratory for the Pacific Northwest. If a family member or friend has received an organ, corneal or tissue transplant, we have likely touched their life.



Two strangers a Continent Apart, Connected by Blood

In May 2013 Mark Tose received a devastating diagnosis. The 60-year-old Boeing senior manager, pilot and musician was told he had acute myeloid leukemia. Working with his doctors, Mark would battle the cancer with five rounds of chemotherapy over seven months. For a time, the cancer was in remission.

Doctors told Mark that to extend his life he would need a bone marrow stem cell transplant. After no one in his family proved to be a match, Mark turned to Be The Match®—the largest bone marrow registry in the world and a Bloodworks Northwest partner agency. This was Mark's last chance to connect with a potential donor.

About the same time as Mark's diagnosis, Reed Salmons—then a 22-year-old pre-med student at Dickinson College in Pennsylvania—decided to register with Be The Match as a possible bone marrow donor. Soon after, Reed got the call: his bone marrow had been matched with a patient desperately needing a transplant. Reed immediately began a series of injections to increase his stem cell production in preparation for donation through apheresis, a special kind of blood donation that filters out stem cells and returns the rest of his blood components.

Reed didn't know it then, but the life he would save was that of Mark Tose. Reed's donated stem cells arrived in Seattle in January 2014, just ahead of a big winter storm. By this time Mark was extremely ill. Before the transplant he needed multiple platelet and red cell transfusions. Even after the transplant, his doctors warned that there was a 20-30% chance Mark wouldn't survive the first 100 days.

Survive he did. On April 25, 2015, Mark Tose and Reed Salmons—two strangers a continent apart, but whose lives are now forever connected—met for the first time at BloodworksNW's Seattle office. There wasn't a dry eye anywhere. It turned out that Mark and Reed shared the same favorite catchphrase, capturing their optimistic approach to life. That day, they repeated it many times: "It's all good!"

Having been through this experience together, Mark and Reed have a message: sign up for the bone marrow donor registry. "Registering was quick, easy and painless—just a cheek swab," says Reed. "It's amazing how something so simple can make such a difference." Adds Mark, "Because of Reed's donation I was given the gift of a second chance. The more people who sign up for the donor registry, the more lives that can be saved."



Be The Match

Every year about 10,000 people need a bone marrow transplant. Sadly, only half will receive one. But you can help. Working together with the national Be The Match Registry, BloodworksNW recruits potential donors to provide stem cells for patients with leukemia and other diseases. We also coordinate intensive donor testing, medical history reviews, physical exams, donor follow-up and perform stem cell collections. All it takes is a cheek swab to be registered.

Learn how you can register at BloodworksNW.org/marrow



A reunion of every past and present hemophilia care program director at the 40th anniversary celebration. L to R: Drs. Rebecca Kruse-Jarres, Barbara Konkle, Neil Josephson, Art Thompson, and Richard Counts.

Washington Center for Bleeding Disorders

At the hemophilia care program we have been taking care of people with bleeding disorders in the Pacific Northwest for over 40 years. Our care program is now known as the Washington Center for Bleeding Disorders—a dedicated team of healthcare providers finding new and better ways to serve people with bleeding disorders—all backed by leading researchers at the Bloodworks Research Institute.

Comprehensive care clinics throughout the state offer patients a place to go for physician visits, medical consultation, physical therapy and social services. Adult and pediatric patients, family members and other healthcare providers have 24/7 telephone

access to our specialized medical team. Translation services are available in many languages.

In 2015 we opened an in-house pharmacy at our Central Seattle location to better provide patients with clotting factor at low cost, with the added convenience of online ordering for medications and home infusion supplies. We added a second physical therapist to provide more therapy options for patients. An ultrasound machine was purchased for the center to assess joints for acute and chronic problems, and to distinguish bleeding from other potential complications.

Other things haven't changed. We've been focused for 40 years on care and support to help patients achieve and maintain optimal wellbeing.

We continue to have outreach clinics at Yakima, Spokane, Tri-Cities, Wenatchee, Olympia, and Tacoma. We continue to partner closely with the hemophilia treatment centers at Seattle Children's Hospital and Sacred Heart in Spokane. Our close relationship and collaboration with the Bleeding Disorders Foundation of Washington (BDFW) is as strong as ever—together we offer Camp I-Vy, a medically supervised summer camp experience for children with bleeding disorders.

Connected by Hemophilia, United in Progress

BloodworksNW is leading the charge in hemophilia care and research. Hemophilia is a rare bleeding disorder in which the blood doesn't clot normally; it can be caused by more than 3,500 different genetic mutations. Today more than 3,500 people have enrolled in My Life, Our Future (MLOF), a nationwide program founded by BloodworksNW and other three other organizations to offer free genetic testing to people with hemophilia. Through MLOF, people with hemophilia can learn which mutation causes

their hemophilia while contributing to breakthroughs that might help tomorrow. Patients can opt to participate in a large-scale research project so their test results can be studied and utilized by scientists to understand the causes and effects of hemophilia, leading to new and better treatments. BloodworksNW's role in performing genetic testing and storing the blood samples puts us at the forefront of this major effort to improve the lives of people with hemophilia everywhere.

"The more hemophilia patients we genotype today, the more equipped we will be to inform the scientific advances of tomorrow."

Barbara Konkle, MD
Director of Clinical and Translational Research
Bloodworks Research

A Liver Transplant, A Promise Fulfilled

Ten years ago, Gary Arvan received a liver transplant. Primary sclerosing cholangitis, a disease of the bile ducts, had destroyed Gary's liver and threatened to take his life. The transplant was complicated. During his surgery Gary needed 23 units of blood.

But Gary came through with flying colors. Before long he was once again his former animated, vibrant and athletic self. In fact, only one year after his liver transplant Gary successfully completed the annual 200-mile Seattle-to-Portland bike ride.

Gary also made good on a promise he had made: to raise his two boys to manhood. In 2015 Gary watched proudly as his older son, Dan, graduated from Washington State University. His younger son, Steven, is now a junior at WSU. Gary reflects, "Seeing Dan graduate was one of the best moments of my life. I'm so grateful for everyone—my doctors, family and friends—who made it possible for me to be there."

Apart from the blood components he received, Gary's transplant surgery owes its success to the Specialty Diagnostic Laboratories of Bloodworks Northwest. Patients like Gary who are awaiting organ transplants undergo sophisticated testing—human leukocyte antigen (HLA) typing, HLA antibody screening and lymphocyte crossmatching—to ensure the safest



Multiple laboratories at Bloodworks Northwest combine innovation, specialized testing and medical expertise to deliver reliable, timely results. We support clinical testing, research, medical device development and clinical trials. Through one-on-one consultations our laboratory teams and medical directors collaborate with physicians—providing expert assistance to solve complicated, critical challenges—whether in clinical care for patients or in innovative research.



match when a donor organ becomes available. Our Immunogenetics/HLA lab is the only one certified to do this testing for organ transplant programs in Seattle. The lab also works with the transplant program when immunological problems arise in order to keep the organ functioning.



Since his surgery Gary has become a strong advocate for all of BloodworksNW's programs. He volunteers with our communications team as a photographer, and often attends special donor events.

In July 2015, Gary and his wife Poppy—along with a team of family and friends—repeated the Seattle-to-Portland bike ride. It celebrated the 10th anniversary of his successful surgery and a decade of life well-lived that Gary might not otherwise have experienced. The group dedicated the ride to BloodworksNW. "The bike ride to Portland wasn't just about the bike ride," Gary says. "It was my way of acknowledging the second chance I received, appreciating my good health and living life to its fullest."

Areas of expertise include:

- Bleeding disorders, including molecular genotyping
- Donor testing, including infectious disease by NAT
- Immunohematology Reference testing, including molecular genotyping
- Platelet immunology genotyping, alloantibody and autoantibody identification
- Transfusion service
- Transplantation immunology, HLA and non-HLA alloantigen genotyping and antibody identification



BloodworksNW Grows in Portland

Bloodworks Northwest has been selected by both Legacy Health and Providence Health as their sole provider of blood components. Today, we provide 55 percent of all blood components used in Portland Metro hospitals, while also supporting hospitals in other Oregon communities. Through Lane Blood Center in Eugene, we support all hospitals in Lane and Douglas counties, too.

The opening of our new Portland facility this year deepens these connections. Together we are dedicated to providing the highest level of care possible to patients. The Portland facility provides regular and emergency

distribution of core blood components with a lab that does automated ABO/Rh type confirmations in a new, centralized transfusion model. That translates into quick access for emergency transfusion support for area hospitals depending on us. Annually, the lab will provide the Portland Metro region, Vancouver, and Southwest Washington with 60,000 units of blood components. It is truly a hub for excellence in blood components and transfusion services for the whole region.

We are also building our donor base in Portland. At BloodworksNW we only collect blood in communities where we're supporting local patients and hospitals. Blood collected from donors in Oregon, Clark County, and Southwest Washington is used to support local patients at local hospitals. That means excellent stewardship of the local community blood supply.

Pink Phoenix: Giving Life After Breast Cancer

Susan Rogers, Susan O'Gara, and Jeannine Keller all make time in their busy lives to volunteer for Bloodworks Northwest in Portland. They're also breast cancer survivors, and along with Vancouver/Portland volunteer coordinator Audrey Riggs, are among the 90 women who make up Pink Phoenix—the first all breast-cancer-survivor (BCS) dragon boat team in the country.

"Pinks" come from all different kinds of medical, physical, and team backgrounds. While they all appreciate the exercise and competition, the comradery is what makes Pink Phoenix special.

Audrey sees parallels between the amazing women of Pink Phoenix and BloodworksNW volunteers: everyone on each team shares a common vision.

Susan O. and Jeannine serve as ambassadors at blood drives, providing a warm welcome to donors as they arrive. Susan R. is a donor monitor. She likens the canteen to speed dating: "You get to know some [donors] quite well in just a 10 minute stretch! That's definitely the reward for me."

While no one in this group has needed blood, they know that many fellow survivors have received transfusions. Chemo and radiation can disrupt the cells in the bone

marrow that create new blood cells, making transfusions a vital part of treatment.

Susan O. is even a blood donor now. There's a common misconception that cancer survivors cannot donate blood. "I'm delighted that I can help in that way," she notes.

Susan R. agrees: "Pink Phoenix, for me, was making lemonade out of lemons, and fulfilling my life with outside opportunities like BloodworksNW is more rewarding for me than what I give back. I'm the winner."

We see it as "win/win." We are proud to have the women of Pink Phoenix supporting us!



Myths and Facts about Blood and Blood Donation

Every week, BloodworksNW collects about **4,500** blood donations. That's equivalent to enough donors to fill **14** Boeing 747s.

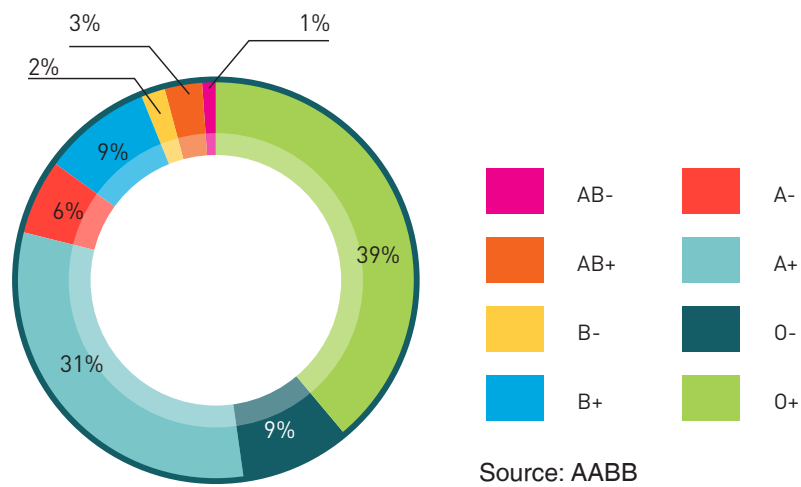


That's even more people than were ahead of you in the airport security line during your last vacation! (By the way, Boeing employees are amazing donors and supporters of BloodworksNW.)



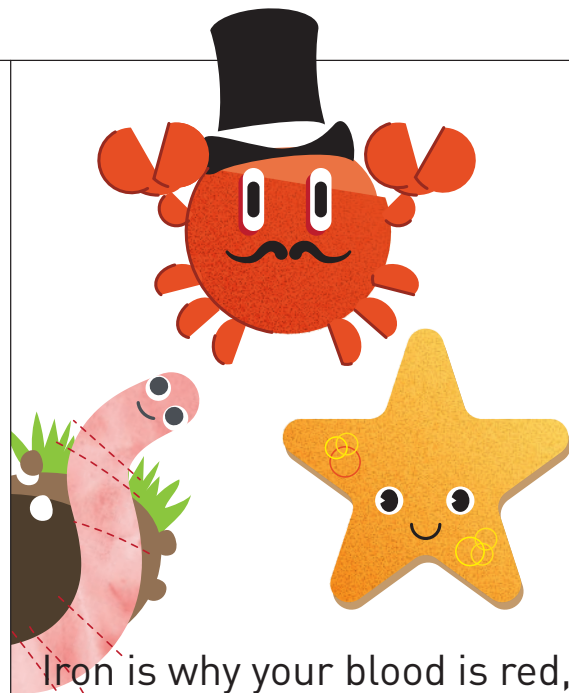
Every organ and tissue in the human body depends on blood to function properly—except one. Can you guess which?

It's the clear cornea of your eyes—where blood perfusion would, well, obscure your vision.



There are eight basic blood types: A, B, AB, and O; each can be either Rh positive or Rh negative.

But today advanced genomic typing of red blood cells has identified more than 300 different types of red blood cells! Our leading researchers closely match donors with rare blood types to patients who have complex crossmatching needs.



Iron is why your blood is red, but did you know blood comes in different colors?

Crabs have blue blood, containing copper rather than iron. Earthworms have green blood, from an iron substance called chlorocruorin. Starfish and some other invertebrates have yellow or clear blood.

Did your week in Paris, France disqualify you from giving blood? What if you're visiting from Paris, TX? "Mais non," and nope!

While there are certain donation restrictions based on visits to some countries and regions, most travel or residency history won't disqualify you from giving blood.



There's a common myth that people with tattoos and piercings can't donate!

If your body art was done in a licensed facility in WA, OR, CA or ID, there is no wait to donate. For all others, it's a one-year wait.



Diabetics need to be comfortable with needles.

But many people with diabetes don't know that they can donate blood, too! Whether you're on or off medication, if your diabetes is under control, you can roll up your sleeve and give a pint.

Blood is life. And Blood Research is Life Saving



Blood delivers oxygen and nutrients. Removes toxins. Regulates our temperature. Combats illness and disease. Sustains us. Connects us to each other.

Bloodworks Research Institute has more than 70 years of discoveries behind it. Our research achieved pioneering innovations to make transfusions safer for trauma patients receiving emergency room care. Our discoveries extended the storage life of blood to 42 days for whole blood and five days for platelets. Our findings have increased the quality of life and life expectancy for people with hemophilia by 30 years and helped make open heart surgery possible. That legacy continues today.

We are one of only four blood centers in the U.S. with a comprehensive, multidisciplinary research institute. We have earned an international reputation for leadership and excellence in blood research. Our team of 70 scientists are sought-after collaborators among the Northwest region's leading biomedical institutions, including the University of Washington Medical Center, Fred Hutchinson Cancer Research Center, Seattle Cancer Care Alliance and Seattle Children's Research.

Our mission is to save lives, and we do that by propelling blood research forward—every day—in partnership with our community. Today Bloodworks Research Institute is tackling four critical challenges of medical science—seeking answers to urgent questions about blood that will save lives.

Prevent unwanted blood clots, the world's number one killer.

Bloodworks is seeking to understand the underlying cause(s) of thrombosis—potentially fatal blood clots in a blood vessel that can cause heart attacks, strokes, and complications during pregnancy. Yet there is no clear understanding about what causes these clots, or how to prevent them. Our goal is to find ways to discover, treat, prevent, and cure unwanted blood clots before they can do harm.

Treat and cure severe bleeding disorders.

An estimated 70 million people worldwide suffer from some form of bleeding disorder. For people with hemophilia—a disorder in which children and adults have little or no blood-clotting capability—Bloodworks is leading clinical investigations into new blood-clotting factors and new gene therapies to tailor therapies to individual patients.

Safer blood transfusions.

In the U.S. someone needs a blood transfusion every two seconds. Cancer patients are likely to need blood transfusion—either during surgery, or after chemotherapy has compromised their bone marrow's ability to make new blood cells.

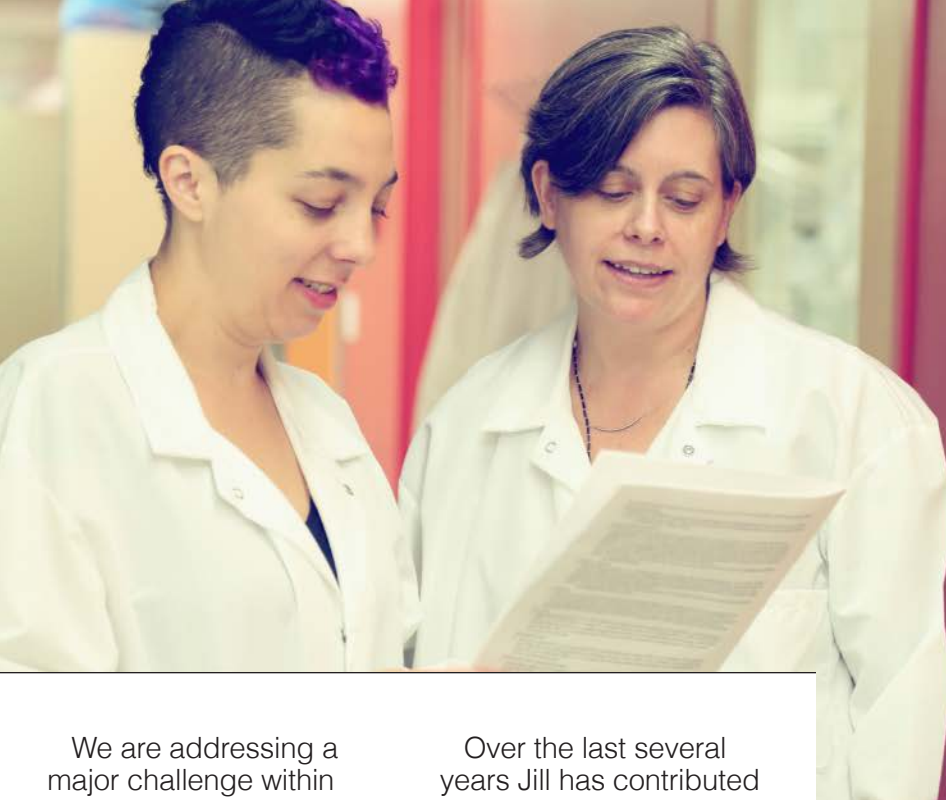
Unfortunately, immune system complications can occur after repeated transfusions when the body develops antibodies that reject new blood transfusions. Bloodworks is a leader in researching genomic blood typing to reduce the risk of life-threatening transfusion-rejection.

Save lives in remote regions.

Bloodworks is exploring the potential to keep blood platelets (the clotting cells in blood) viable for months in a frozen state, or for up to 13 days at room-temperature. Applications range from keeping our wounded soldiers alive on the battlefield until evacuation to life saving care in developing countries, where limited infrastructure prevents the timely delivery of medical supplies and aid. All people should receive the life saving blood they need—in time.

Supporting Future Discoveries

Incubator for innovations by emerging scientists



We are addressing a major challenge within the biomedical research community: fewer and fewer grants are being awarded to young, emerging researchers. Sadly, this forces many promising researchers to abandon innovative ideas in their chosen fields. We'll never know what life-changing medical breakthroughs these emerging scientists might have made.

Bloodworks Research Institute helps address this challenge by providing financial support, mentoring and guidance to a number of emerging researchers. One up-and-coming researcher is Dr. Jill Johnsen, who received her M.D. from Case Western Reserve University School of Medicine in 1998 and trained in hematology and oncology at the University of Michigan. In 2008 she joined one of our medical research teams and became an assistant Professor of Medicine at University of Washington.

Over the last several years Jill has contributed significantly to our understanding of how the blood clotting system is affected by pregnancy. Normally, the body ensures that blood doesn't clot or bleed too easily, a natural balance called hemostasis. During pregnancy, however, the mother produces high levels of clotting factors. While this response may reduce the chances of excess bleeding during birth, it can also put women at risk of developing blood clots during and after pregnancy. These blood clots can lead to life-threatening complications for both mothers and babies.

By furthering our understanding of the timing and nature of changes in clotting factors during pregnancy, Jill ultimately hopes to reduce the number of women who die each year from pregnancy-related causes. Thanks to support from Bloodworks, Jill is now better positioned to obtain National Institutes of Health (NIH) funding for this important work.



Dr. Jill Johnsen M.D. and lab member Kerry Lannert, MT (ASCP).

Financial Contributors

Financial gifts received July 1, 2014 to June 30, 2015

BloodworksNW acknowledges the following visionary and dedicated individuals, foundations, and corporations for their generous financial support during the 2015 fiscal year. Bracketed numbers listed next to names indicate the number of years contributing since 1994. All event gifts are recognized according to the month of the event, and individual contributions include matching gifts received from employers. Because of our community's support and a desire to conserve resources, we are not always able to publish the names of all contributors. We endeavor to publish accurate recognition and apologize for any errors or omissions. Please contact (206) 568-3614 or AFix@BloodworksNW.org to report corrections. Thank you.

Corporations & Foundations

Leadership Circle

\$25,000 to \$99,999

- Anonymous Foundation (17)
- Anonymous Foundation (8)
- ASD Healthcare (5)
- Baxalta (13)
- Ellen Browning Scripps Foundation (5)
- Wal-Mart Foundation (4)

Founders' Council

\$10,000 to \$24,999

- Bayer HealthCare (10)
- BNBuilders, Inc. (10)
- The Boeing Company (13)
- Chambers Family Foundation
- Gary E. Milgard Family Foundation (2)
- Kemper Development Company (5)
- Microsoft (19)
- Precision Electric Group, Inc. (8)
- Puget Sound Energy Foundation (9)
- Roche Diagnostics Corporation (15)

President's Council

\$5,000 to \$9,999

- Ash Consulting (6)
- BioLife Solutions, Inc.
- Cigna Healthcare (10)
- CSL Behring (11)
- Delivery Express, Inc. (10)
- Enwave (9)
- Florence B. Kilworth Foundation (5)
- GLY Construction (5)
- Goldman Sachs (5)
- Group Health Cooperative (6)
- Health Integrated
- Keller Rohrback
- Kibble & Prentice (13)

- Lester & Bernice Smith Foundation (5)
- MacDonald-Miller Facility Solutions (8)
- Moss Adams LLP (9)
- Moz (2)
- Point B (4)
- PSF Mechanical (5)
- The See Foundation (3)
- Stokes Lawrence
- Sun Trust Banks, Inc. (2)
- US Bank (6)
- UW Medicine (5)
- Wallace Properties, Inc. (6)
- Washington Federal (2)
- Washington Federation of State Employees
Local 443 (2)
- Wells Fargo (11)

Executive Council

\$2,500 to \$4,999

- Alaskan Observers (9)
- Alexion Pharmaceuticals (2)
- Avtex (2)
- Community Health Plan of Washington (2)
- GCI Connect MD (3)
- Grifols Biologicals, Inc. (6)
- Hanson Motors (2)
- Hudson Insurance Group (2)
- Jewish Federation of Greater Seattle (2)
- Octapharma (4)
- Overlake Hospital Medical Center (8)
- Paradoxes
- Perkins+Will (2)
- Pfizer (13)
- PopCap Games (2)
- Premera Blue Cross (4)
- Prime Flooring (5)
- Seattle Children's (5)

Separation Technology, Inc., and

- EKF Diagnostics Company
- Squaxin Island Tribe (4)
- Swedish Medical Center (10)
- Talbot Financial
- Terumo BCT, Inc. (13)
- TIAA-CREF (7)
- Totally Chocolate (2)
- Steve Wormeli, CFP – Raymond James

Research Council

\$1,000 to \$2,499

- AlphaGraphics (7)
- Auburn Mechanical (10)
- Capital Medical Center
- Carter Subaru (2)
- Davis, Grimm, Payne & Marra
- Exeter House Residents Association
- Fidelity National Title (2)
- Haemonetics Corporation (4)
- Horeco, Inc. (4)
- NOVA Fisheries (4)
- Novo Nordisk Pharmaceuticals, Inc. (11)
- Project Management Consulting, Inc. (10)
- Providence Health & Services
- Puget Sound Energy, Inc. (9)
- Safeco Insurance Companies
- Salal Credit Union (2)
- Schwabe, Williamson & Wyatt (5)
- SPIE
- TriArc Electric Supply Co. (5)
- Washington Commercial Painters (4)
- WSECU



(#) Years contributing
* Deceased

Individuals

Visionaries

\$100,000 to \$249,999

Mr. Kerry Chesbro and Ms. Joanne Riley* (4)
Larry G. Rand*

Founders' Council

\$10,000 to \$24,999

Dr. James and Susan AuBuchon (7)
Kemper and Betty Freeman (4)
Roxanne and Ernest Greene (13)
Doris Hart (8)
James Hart (8)
Nancy Osborne Sclater (5)
Gifford E. Thomas (16)
David and Lynn Treadwell (7)

President's Council

\$5,000 to \$9,999

Nancy and the late Ellsworth "Buster" Alvord (19)
Ward and Judy Bushnell (6)
The Deasy Family (11)
Leslie Giblett (10)
William and Ann Hart (6)
Toni and Rod Hoffman (13)
John and Bonnie Hutchinson (9)
Michael Lake (7)
Jennifer A. Lewis (12)
Steve and Toni Nicholes (12)
Pamela and Charles Phillips
Jeffrey and Wendy Robinson (6)
Alan and Susan Schulkin (14)
Alice M. Siegal (21)

Executive Council

\$2,500 to \$4,999

Anonymous (3)
Jim and Deanna Anderson (8)
Frederick and Patricia Auch (4)
Steve Boehm
Staci Book
David and Chiara Chylinski
Gina Crosslin (5)
Mark Davis (7)
Douglas Engel (2)
Barbara L. and Roger Erickson (10)
Bonnie Fink and Chris Lyon (4)
Heidi and Andrew Forrester (6)
Carla Fowler (2)
Jeanne Galloway, ND and Vicki Ostrom (4)
Rich and Jan Green (12)
Dinny and Tammy Hansen (3)
Paul Hart (2)
Edwin F. and Noriyo Hawxhurst (4)
Thomas Kasanders (2)
Ashley and Austin Kelmore (4)
Kelan and Elizabeth Koenig
David Larsen and Patricia Akiyama (4)
Bruce McDougall
Eric Mendelsohn (5)
Tran and John Meyers (3)
Helen Neudorfer (8)
Flemming Nielsen (2)
Charles and Anna Satterfield (3)
Sherrill J. Slichter, MD (13)
Kevin and Sarah Smith (6)
Elaine Sonntag Johnson and Daniel Johnson
Tom and Sandy Sterken
Kenneth Wahlin (5)

Marjorie Widitz Memorial Endowment Fund for Research (12)
Norm and Pam Widitz (12)
Glenn and Kristin Wisegarver (4)
Kerri Wood (3)
Yanyun Wu, MD (2)

Research Council

\$1,000 to \$2,499

2 Anonymous
Frank Abersfeller Family (18)
David and Mary Alhadeff (5)
Arleta Rae Allen (15)
James and Susan Applegate (6)
Liz Azose and David Balint (6)
Dave and Erin Ball (6)
Linda Barnes and Ed Swan (6)
George D. Bartell (19)
Trudy M. Bartosek
Linda Berkman (6)
Betty Bottler (4)
Herb Bridge and Edie Hilliard (18)
Joe and Shasta Brucker (2)
James and Mary Jo Bruckner
Ruth Burstiner (11)
Capt. John H. Byrd, USCG (Ret) (6)
Mike and Joy Cafferty (6)
Sara Carter (2)
Alex Castro
Jim and Evelyn Chumbley (3)
Quentin and Malissa Clark (7)
Marilyn and Donald Covey (21)
William S. Cummings (3)
Cheryl and Tony D'Ambrosio (7)
Elsie Franz Finley (18)
Phelps Fisher and Ann Fisher Hanson (15)
Chad and Amy Fletcher (12)
Robert W. Franz (17)
Mr. and Mrs. E. P. Garrett (15)
Robert J. and Carolyn Gleason (11)
Steven Goldstein and Mary Casey-Goldstein (10)
Holli Harris (2)
York and Alice Harris (2)
John and Linda Hayhurst (14)
John and Jennifer Hazzard (4)
David T. Heckel (11)
Fred F. Herzberg (11)
Alice and Paul Hill (2)
Carolyn and John Hojaboom (6)
Charles and Liz Hopper (17)
Stephen and Elsie Hulsizer (7)
Greg Jablonski (4)
Mike and Molly Jacobsen (4)
Pierre and Christine Jammes
Anita Kendall and Will Simmons (2)
Eleanor V. Kent and Robert V. Schoos (9)
John and Clarice King (4)
Dr. Barbara Konkle and Dr. Peter Kollros (6)
Jim Lampman
Kristi N. and Robert D. Lee (8)
Penelope J. Lie (6)
Dr. José A. López and Dr. Funda Vakar-López (10)
Laura Lundgren (4)
Thomas G. Macnamara (8)
Robert L. Malone
Mark and Marc (4)
Peter and Susan Marsh
Scott D. and Jessica Miller (8)
Pamela and Donald Mitchell (12)

Lanie and John Paul Mullally (5)
Thom and Alisa Murray
Tom and Beth Newman (6)
John and Susan Noble (2)
James and Rebecca Ort (9)
Dana and Tyler Panteleef
Zachary and Colleen Peterson (2)
Cynthia Petrie, CPA
Andrew and Marianna Price (8)
John and Priscilla Privat (11)
Annette and Jim Promes (5)
Mike and Julie Rice
Stan and Michele Rosen (3)
Henry and Vickie Sanders (5)
Eulalie and Carlo Scandiuzzi (4)
Bob Schweigert (2)
John and Dorcy Seethoff (6)
Barbara and Peter Sherland (15)
H. Mason and Connie C. Sizemore (20)
Phil R. Smith
Nancy Hewitt Spaeth (9)
Roger and Phyllis Stark
Nick and Courtney Stefonick (2)
David Stephens, MD (3)
Joe Vetto
Roy Vincent and Kalin McKenna
Robert and Joan Wallace (11)
Valerie Webber (9)
James and Linda Webster
Roy and Rhonda Whitehead (2)
Christine and Jason Wickland (3)
Franklin Wirtz and Jessica Thompson (12)
Amy Young

Fellows

\$500 to \$999

7 Anonymous
John Akin and Mary Stevens (12)
Kirsten Alcorn (2)
Timothy and Barbara Allen (7)
Erica and Lee Ash (6)
Kiefer Atkins (3)
Bill Baldwin (3)
Jillian Barron and Jonas Simonis (3)
Sam and LuAnn Baxter (5)
Brent and Jennifer Beardall (2)
Bonnie Berk (4)
Ruth and Greg Berkman (7)
John J. Betz (11)
Fraser and Deirdre Black (6)
Jack Blaylock (11)
Tim and Paige Brown (2)
Sean Clemmons
Ben Coffman
Mrs. D. H. Coleman (12)
Cleo Corcoran (12)
Drs. Sandra J. and Richard B. Counts (20)
Cal and Lois Crow (14)
Heather A. Davis (6)
Christine and Michael Donatelli (2)
David Ellison (3)
Kelly and Shane Farrell
David and Cindy Fennell (6)
Theresa Fenton (7)
Colleen and John Ferris (9)
A. Kent Fisher and Barbra Richardson (7)
Phelps and Christel Fisher (15)
Tom Foster
Kirk Funk (4)
Cathy Gibson and Aleksei Krasnokutsky (2)
Craig Gonzales (2)

Individual Contributors

Continued

George and Catherine Greer (5)
Jane A. Gross and Scott Taylor (4)
Jo Anne and Robert Hacker (2)
Rebecca and Paul Haley (3)
Randy and Beth Hamlin (4)
Robert and Judith Hammond (9)
Cheryl Hayes
Harold and Mary Frances Hill (12)
Jason Holmes (4)
Lynda Hoover (2)
Andrea Hovey (5)
Lauren Howard
Nina Huang (2)
Susan and Milton Jones (7)
Stephen June
Mohit Kathuria (5)
Angie and Don Keller (2)
Ted B. Kibble (9)
Lee and Anne Kilcup (2)
Lisa King (3)
Douglas and Willeen Klan (15)
Elizabeth Kutcipal (3)
Doug and Ramona Lawrence
Marty and Sandy Linauts (8)
Jenn and Andy Lindal
Cheryl Lubbert
Michael and Lisa Marsh (2)
Elizabeth A. Marx (9)
Jerry May (2)
Lisa Mayfield (2)
Kristin A. McCullough
Pat and Nina McKay (4)
Deborah Milter (7)
Kristina and Jon Minear (7)
David and Barbara Morrison (8)
Carol Mukasa (5)
Valerie and Brent Naylor
Randall and Karen Nelson (10)
Sue Nixon (2)
Colette Norby-Slycord (4)
Robert and Laurie O'Brien (3)
Ryan Olson
Ryan O'Rourke (2)
Loretta P. Orpilla (13)
Kaye and Dennis Ostgard
Bernard and Martha Pachter (5)
Darin and Ginger Painter (10)
Vijya Patel
Karen Perry
Kevin and Ann Peterson (4)
Robert and Phyllis Peterson (5)
Joseph and Lisa Piper (2)
Paul Pitlick
Milt and Tara Reimers (4)
Ryan Robertson (3)
Pamela Robinson and Justin Walsh
Calvin Rogers
Ron and Susan Runyon (4)
Sarah and Andrew Samnick (3)
Lee Scheingold (5)
Tina M. Schumann

Ken and Liz Setran (11)
Mark and Sue Shinstrom (4)
Robert J. Smith (4)
Joan and Scott St. Marie (18)
Devon A. Steinbacher (2)
Eric and Kay Stelter
Amy Stephson and Brian Rapalee (4)
Sally Sullivan and
Reginald Tucker (15)
Jon and Kathleen Summers (13)
Karin and Steve Swope
Roger Terriere
Gregory J. Trautman (9)
Craig and Jelene Trewet
Terry and Patricia Waller (9)
Amie and Ben Warden
Steve Wellons (3)
Daniel R. Westberg
Ann and Thomas Wood (2)
Rebecca Woodruff

Sustainers

\$250 to \$499

8 Anonymous
Constance Allen
Linda and Andy Ambrose (4)
Marie Anchordoguy and
Leslie Helm (9)
Gary S. Anderson (6)
Sephren Barrow (3)
Txomin Barturen
Erik and Gabrielle Bedell
John Belanich (9)
Jill Benson
Jennifer Berger
Luther Black and Chris Wright (3)
Blake and Shilpa Bratt
Peter Bray
Chris Brown
Tamara Bunn
John Cake
Daria Cardin (4)
Stan and Sue Carlson (10)
Paul Chamberlain (3)
Jeff Cook
Norman and Pat Dahlstedt (5)
Robin Dalmas (6)
Duane and Gretchen Daniels (2)
Karyn and Donald Denton (4)
Marilynn A. Dodge (11)
Katherine Drewel (2)
Jason Dunn
Phil Dyer and Carolyn Pierce-Dyer (6)
Mrs. Georgia Elder (6)
Rudy and Julie Englund (2)
Don Etsekson
Jim Feldman
Frank and Susan Finneran (5)
Ingrid Flaar (5)
Amir A. Forati
John H. Gerth (3)

Glenn and Linda Gerth (2)
John and Shiloh Gillespie (8)
Michael Gilmore
James Goldsmith (2)
Christine Goodwin
James Gore and Susan Dittig (6)
Mike and Cheryl Gould
Dorothy and Eric Greenwood (2)
Jeff Grieff
Christopher E. Gruenfeld (7)
Lisa Guzman
Scott Hale
Vincent Hanson
Lloyd F. Hara and Liz Anderson (8)
Jane and Jim Harrison (4)
Doris and Ralph Hatlen (5)
Mark and Mary Hatlen (6)
Kris Hermanns
Gregory P. Hilborn (5)
John Hill
Joe and Jackie Holden (6)
Paul Ikeda (3)
Cyndi Israel
Mike and Erin Jacobsen (5)
Nicole Jacobsen (5)
Stacy and Kim Johnson (2)
Cassandra Johnson
John and Barbara June
Helen Kelly (3)
Bruce and Karen Kirschner (3)
Gayle Krauland (5)
Ellen B. Kritzman (4)
June Kubo
Linda R. Kuula (2)
Joanne Lai (3)
Frank A. Lawler and
Ann E. McCurdy (9)
Alan and Leslie Lederman (2)
Jyl and Chris Leiningner
Tom Lerner
Lacey Leverda (5)
Victoria and Sam Liao (2)
Col. & Mrs. Carl B. Lind (16)
Molly and Gary Madson (14)
Richard Mathes (3)
Meredith Mathews, MD and
Judy E. Woo, PhD (6)
Mark K. McKole (5)
Winston McMahon
Lesley Mettler Auld (7)
Reid and Audrey Morgan (8)
Patrick E. Morin (11)
Alison Moss
Patrick Mulloy
Elmer Neu (16)
Tod Nissle
Jon Noll (2)
Ronald C. Norris (3)
John Padgett
Stephanie Pagé (7)
Susan A. Pagé (3)

Karen S. Pasewark (8)
Susan and Mark Peterson (8)
Richard and Leanne Philipovich (4)
Elizabeth J. Porter
Kimberley Prah
Jeffrey and Amanda Pritchard
Gregory Proulx (3)
William E. and Wendy Rabel (2)
Kell Rabern (2)
Yusuf and Ada Rashid
Scott Reese (4)
Ben and Rachel Reiber (3)
Jeff Richey (2)
LaVar Riniker
Diane B. Robinson (8)
Jim and Lisa Rojecki (9)
Ruth Rolander (2)
Cindy Runger (3)
Philip and Jennifer Rutledge (3)
Gillian Schauer (2)
Ron Scherer
Suzanne Schreck (2)
Brian Schulkin (5)
Jay and Rachel Schulkin (3)
Maxine Sellers
Spencer and Erin Shepler
Sarah and John Shortall (7)
Joe and Linda Sloss
Marian Squibb (8)
James and Barbara Stapper (13)
Christine Stepherson (6)
Mick and Mary Tacher (4)
Mark Taylor
Jeff Techico
Frank and Geraldine Tubridy (6)
Dwayne Whitis and
Christina Justinian (7)
Beverly M. Wilson (10)
Peggy Wilton (16)
Randall W. Young (4)

* Deceased

The Heritage Society: Stewards of the Future

The Heritage Society is a group honoring individuals who have made special provisions to benefit Bloodworks Northwest for decades to come. Dedicated individuals have made commitments of support to Bloodworks Northwest to be fulfilled by property, wills, trusts, retirement plans, insurance, or other planned gifts.

Bloodworks Northwest would like to extend our deepest appreciation to all members of the Heritage Society, as their gifts will provide for the health and well-being of future generations throughout the Pacific Northwest. For more information, please contact Sarah Steinberg at (206) 568-3612 or SarahSt@bloodworksnw.org.

4 Anonymous
Don and Jane Abel*
John Akin and Mary Stevens
Arleta Rae Allen
Timothy and Barbara Allen
Marcelle Baumgartner
Dianne Blakely
Veronica Chadash
Mr. Kerry Chesbro and Ms. Joanne Riley*
Cleo Corcoran
Norman L. Culbertson*
Cheryl and Tony D'Ambrosio
Molly Di Iulio
Roy A. Ferguson
Tracey and Gerald Galland
Julietta Gellerson*
Robert P. Gibb, MD
Leslie Giblett
Jonathan and Susan Hayes
Stephen and Elsie Hulsizer
Stephen W. Katz and Audrey Fine
Nick and Beryl Kloze*

Russell E. Laase
Meg Metzger
Mr. and Mrs. Roy Murray
Patricia A. Murray
Margaret Perthou-Taylor*
Larry G. Rand*
Virginia Pratt Root
John and Kim Satterlee
Julie and Steve Scofield
Theodore A. and
Dorothy A. Smith
Devon A. Steinbacher
Jon and Kathleen
Summers
Charlotte B. Swartz
Joan Walsh
Valerie Webber
Kerri Wood
Randall W. Young
Karen Y. Zink

*Deceased



Tim Fant: Double Down on Doing Good

When it comes to giving back to his community, Tim Fant doubles down. He donates financially to Bloodworks Northwest through a workplace giving program, and he's also a regular-as-clockwork blood donor. In fact, Tim gives blood as often as possible—more than 220 donations so far. Talk about building community!

Tim doesn't stop there. In June 2015 he hosted a first-time blood drive at the Microsoft offices at Lincoln Square in Bellevue. The drive

recruited 37 donors, including 19 first-time blood donors. That event alone collected enough blood to touch or save the lives of up to 75 people!

Why is Tim so dedicated to BloodworksNW? Because he understands firsthand the power and importance of giving back. When Tim's wife, Mitzi, was pregnant with their younger son, she needed platelets to survive. At the time, Tim was already donating at the maximum level of 24 units of platelets a year.

But seeing up close how important blood components are when a loved one needs them made Tim even more committed.

Tim says: "I knew that Mitzi wasn't using platelets that I donated. Instead, it was only through the generous donations of others that she survived. I thank everyone who makes regular blood donations—you never know when it will save a life." Tim personifies the idea of giving back and paying it forward. In the process he's touched hundreds of lives.

In Honor

Thank you for giving in honor of someone special in your life while supporting BloodworksNW's mission. Tribute gifts in honor of 2015 Swim for Life participants can be found at BloodworksNW.org/contributors/swim.

James P. AuBuchon

Herb Bridge and Edie Hilliard

Jennie M. Bosket

Gayle H. Chew
Rich and Cheryl Sadler

Maria D'Ambrosio

Cheryl and Tony D'Ambrosio

Judith Earle

Olive E. Brown

Madeline R. Froning

Karen Hatchett

Hunter Goodman

Senator Bruce Dammeier
Brenda Fitzsimmons
Sharon M. Heath
Jean M. Leonard
Cher McCarson
Ralph D. Munro
Karen Sushak

Lynne Green

Holly Barlow

Wayne Katon

Marilyn and Richard Layton

Ashley Kelmore

Anonymous
Jocelyn Kuzminski

Zachary Kramer

Patricia J. Harvey

David Leitch

Anonymous

Celeste Oglesby

Kirk Funk

Paul Pitlick

Mary S. Pitlick

Cole Prill

Cecilia L. Purvis
Mr. and Mrs. Mike Seney

Leah S. Rapalee

Craig and Deborah Lawson

Sarah Roberts

Anonymous

Anna Robinson

Ovarian Cancer Alliance of
OR/SW WA

Alan W. Schulkin

Ruth and Greg Berkman
Michael and Kathleen Collum
Judith K. Daikoku
Marilyn and Richard Layton
LaFaye and Robert McFerrin
Pamela C. Mead
Bernard and Martha Pachter
Doris Rolander
Brian Schulkin

Alan and Susan Schulkin

Sarah and John Shortall

Phil R. Smith

Polly Rosmond

Sally J. Sullivan

Anonymous
Dr. James and Mrs. Susan
AuBuchon
Mr. and Mrs. James Douma
Jeanne Galloway, ND and
Vicki Ostrom

Robert J. and Carolyn Gleason
Charles and Liz Hopper
Jeff King
David Larsen and Patricia Akiyama
Marty and Sandy Linauts
Randall and Karen Nelson
Jeffrey and Amanda Pritchard

Linda Van Beek

Colleen Eslinger

Allen Varnadore

Anonymous

David Walker

Franz and Elizabeth Rau

Kerri Wood

Peter and Corky Campbell

Yanyun Wu

Charles R. Whelan

The Fowlers

Scott started donating blood 15 years ago after his grandfather needed blood during emergency surgery to repair a bleeding ulcer. Since then, he's donated more than five gallons of blood.

When Scott learned about the Young Professional Ambassadors (YPA—Bloodworks Northwest's junior board) he quickly joined and immediately started helping one of his favorite organizations to meet a vital need: reaching out to 20 and 30 somethings, a demographic that is greatly underrepresented among BloodworksNW's regular blood donors and financial contributors.

Scott is not the only community-minded donor in his family. When he and his wife, Anna, were expecting their second son, Nick, they signed up to donate Nick's cord blood in a program offered by BloodworksNW. Scott notes, "I'd been donating blood regularly. Anna and I felt that cord blood donation just seemed like the right thing to do. Though it was unlikely Nick would need his cord blood, someone else certainly would."

It turned out Scott was right. About a year later, Anna received a call from BloodworksNW informing her that Nick's cord blood had been used to treat a young girl with cancer. Anna remembers, "It was one of the best days in my life to know that our son's blood was able to save the life of a little girl. I could only imagine her parents' joy."

We salute the Fowlers for the many ways they donate their time, their blood, and their funds to help BloodworksNW save lives in the community.



In Memory

Thank you for giving in memory of someone special in your life while supporting Bloodworks Northwest's mission.

Gerald W. Abernathy
Randall W. Young

Frank Abersfeller
Frank Abersfeller Family

Gilbeth Anderson
Gary S. Anderson

Kyle Armstrong
Merle and Karla Armstrong

Mary "Ba" Beerbower
John and Debra Hill

Jeffrey Berkman
Linda Berkman

James F. Blocker
Judith F. Bjorback
Dorothy Breedlove
Susan Meyers

Janie Butler
Gregory Dirks

Patricia Byrd
Capt. John H. Byrd,
USCG (Ret)

Albert Chang
Kim Koyamatsu, MD

Daniel H. Coleman, MD
Molly and Gary Madson

William Conn
Julie Hayden

Jack Eckert
Cheri Romero

Emerson Elder
Georgia Elder

Laura L. Flower
Lumedx Corporation

James George
Betty George

Eloise R. Giblett
Kris Hermanns
Marthanna Veblen

Ann Goodman Bahm
Marty and Suzanne Goodman

Rita Haaker
Anonymous

JD Hall
Naomi A. Hall

**Dr. J. Andrew Hall Jr. and
Naomi A. Hall**
George and
Catherine Greer

Donna L. Harvey
Charles S. Harvey

Charles A. Heckman
Anonymous

Brian Hernandez
Norman and
Pat Dahlstedt

Lorena Honeycutt
Arleta Rae Allen

Patrick Jaques
DeAnna Jaques

Philip O. Johnson
Anonymous

Kito Kaneta
Miyoko Kaneta

Laura Keiser
Lauren L. Cooley

Michael Kent
Bernice Kent

Ellie King
Richard King

Ted R. Lammers
Christina A. Machnik

Sharon Lee
Kristin A. McCullough

**Alice and
Charles Lester**
Anne and
Jerry Popowski

Richard Lusch
Lauren L. Cooley

Barnard Maughlin
Marian Squibb

Phyllis Melvin
Phillip Lane

Denny Morrison
David and
Barbara Morrison

James O'Connell
Anonymous

Ivan Olson
Carol I. Parks

Margaret Peterson
Robert and
Phyllis Peterson

Toshi Petty
H.D. and Dona Cowan

Steve Poe
Anonymous

Mary L. Porter
Kent Porter

Lucien R. Prokopowich
Janet Prokopowich

Willie R. Redmond
Anonymous

George Rowland
Warren and
Diana Aakervik

George M. Sandstrom
Karen S. Pasewark

Ulrich C. Schoettle
Pete and Molly Peterson
Vicki H. Schoettle

Ronald K. Smith
Phil R. Smith

David B. Spraggins
Mark and
Susan Pickard

**Maryam Irene
Rassouliau Stall**
Farhad and
Nancy Rassouliau

Ronald C. Sterland
Rosalie A. Sterland

Bob Temple
Barbara J. Temple

Roger M. Vail
Manijeh F. Vail

William Wann
Scott Reese
Janet B. Wegner
Steve Wellons

Bryan P. Welch
Arlene Miller

Michael P. Whitley
Marie Legaz Whitley

Barbara H. Wiles
JoAnne Rudo

Donald C. Wilson
Beverly M. Wilson

Gary Wood
Linda and
Andy Ambrose
Davis and
Marianne Beauchamp
Dorothy and Eric Greenwood
Jo Anne and
Robert Hacker
Richard Korry
Susan E. Levy
Mark and Marc
Dennis and
Patricia McLeod
Gordy and Sally Phares
Kell Rabern
Srilatha Shoroff
Richard N. Weeks
Marilyn Williams
Ann and Thomas Wood
Kerri Wood
Phil Wood and
Judy Mahoney

Donna L. Young
Randall W. Young

Jinhong Zhang
Yanyun Wu

The Campaign for Bloodworks: Advancing Health, Accelerating Discovery

**Financial gifts received July 1, 2014
to June 30, 2015**

Anonymous
Patricia Akiyama and David Larsen
Wendy and Jeff Apland
Dr. and Mrs. James P. AuBuchon
Mark Davis
Kent Fisher and Barbra Richardson
Dr. W. Conrad Liles and Dr. Susan M. Graham
Meredith Mathews, MD and Judy Eng Woo, PhD
Deborah Milter
Ken Mortimer and Kay Nagle in memory of Lorrie Mortimer and Joe Nagle
Jim and Gaye Pigott
Jeffrey and Amanda Pritchard
In Memory of Ben and Florence Schulkin - Alan and Susan Schulkin
Robert and Joan Wallace
Glenn and Kristin Wisegarver

We often say “Families are Connected by Blood.”

Communities are, too.



When tragedies occur, they can profoundly touch and sadden entire communities. They also test community-based organizations like Bloodworks Northwest to perform our vital role in healthcare.

Two different communities, 350 miles apart, are rocked by terrible tragedies. A tourist vehicle collides with a charter bus carrying students from a local college on Seattle's Aurora Bridge. Shootings occur on a community college campus in a small Oregon town.

The connection? Emergency responders, healthcare providers, and ordinary citizens come together to respond to heart-wrenching tragedy. Hospitals in both communities are depending on BloodworksNW for their blood components.

In the aftermath of these events hundreds of people went to blood centers and mobile drives in Seattle, to Lane Blood Center in Eugene, and to a mobile drive in Roseburg. Many were first-time blood donors. News stories and scores of social media posts shone a spotlight on the importance of the blood supply to help their community respond. Extraordinary demands were made on our teams in Washington and Oregon. The intensified efforts spanned days. There were long lines and people waiting patiently—sometimes for hours into the evening—to donate. Local businesses provided food.

Testing and processing staff worked around the clock. So did the couriers picking up and delivering blood components. Everyone pitched in to go far beyond the call of duty.

We were profoundly grateful for the public outpouring of compassion and caring in both communities. This support helped us meet the needs of victims receiving ongoing care. It replenished the community blood supply to the four-day inventory necessary to meet everyday patient needs. It ensured we would be ready for the next emergency—in the Northwest, or to help people elsewhere in the U.S. should tragedy or disaster happen.

We salute and give thanks to emergency responders, citizens, and healthcare providers at 11 hospitals in Washington and Oregon who treated and cared for the victims of these tragedies. We're very proud to be their partners in providing the best healthcare possible in every community we serve.

We can never know when tragedies might happen. But our ability to respond immediately when they do is made possible by dedicated, generous blood donors and volunteers, and communities that care. Thank you.

**Your Northwest source for
lifesaving blood for more than
70 years.**



High School Students Come Through



175

high schools held blood drives during the 2014-2015 school year.

449

individual blood drives.



12,237

people registered to donate.



17%

of all whole blood donations came from high school donors.



9,143

first-time donors!



High School: Where careers in blood donation start!

One of the biggest priorities and greatest privileges we have at Bloodworks Northwest is introducing high school students to the experience of donating blood for the very first time. Our staff members and volunteers recognize the critical role we play in cultivating what can be a lifelong habit in young people to give back to their community. We enthusiastically take on the responsibility to educate, comfort, and appreciate these first-time donors throughout the process. The next generation of donors!

Every high school blood drive is the culmination of hours of volunteer work: planning meetings, classroom presentations, identifying a location – the many tasks involved in getting young people to sign up and show up prepared to donate blood. We witness young leaders emerge and a school community coalescing around a cause. It's our lifesaving mission in action.

Top Ten High Schools

School	Total Donor Registrations
Bothell High School	372
Cascade High School	371
Auburn High School	346
Kentwood High School	306
Mt. Si High School	302
Black Hills High School	278
Redmond High School	276
Franklin High School	269
Inglemoor High School	261
Snohomish High School	258

Northwest Communities Served



Your Blood Works Miracles Here

WASHINGTON

Clallam County

Forks Community Hospital
Olympic Medical Center

Clark County

Legacy Salmon Creek Medical Center
PeaceHealth Southwest Medical Center

Cowlitz County

PeaceHealth St. John Medical Center

Grays Harbor County

Grays Harbor Community Hospital
Summit Pacific Medical Center

Island County

Whidbey General Hospital

Jefferson County

Jefferson Healthcare

King County

EvergreenHealth
Group Health
Highline Medical Center
Kindred Hospital
MultiCare Auburn Medical Center
Northwest Kidney Centers
Overlake Hospital Medical Center
Regional Hospital for Respiratory and Complex Care
Seattle Cancer Care Alliance
Seattle Children's
Snoqualmie Valley Hospital
St. Elizabeth Hospital
Swedish Medical Center First Hill, Ballard, Cherry Hill, Issaquah
University of Washington Medical Center
UW Medicine
UW Medicine/Harborview Medical Center
UW Medicine Northwest Hospital and Medical Center
UW Medicine/Valley Medical Center
VA Puget Sound Healthcare System
Virginia Mason Medical Center

Kitsap County

Harrison Medical Center
Naval Hospital Bremerton

Lewis County

Morton General Hospital
Providence Centralia Hospital

Mason County

Mason General Hospital

Pierce County

Madigan Healthcare Systems

Skagit County

Island Hospital
Skagit Valley Hospital
United General Hospital

Snohomish County

Cascade Valley Hospital
Providence Regional Medical Center
Swedish Edmonds
Evergreen Health Monroe

Thurston County

Capital Medical Center
Providence St. Peter Hospital

Whatcom County

PeaceHealth St. Joseph
PeaceHealth Peace Island Medical Center

ALASKA

PeaceHealth Ketchikan Medical Center

MAINE

Central Maine Medical Center
Eastern Maine Medical Center

NEW HAMPSHIRE

Dartmouth Hitchcock Medical Center

OREGON

Clackamas County

Providence Willamette Falls Medical Center
Providence Milwaukie Hospital

Clatsop County

Columbia Memorial Hospital
Providence Seaside Hospital

Douglas County

Mercy Medical Center
VA Roseburg Healthcare System

Hood River County

Providence Hood River Memorial Hospital

Jackson County

Providence Medford Medical Center

Lane County

McKenzie-Willamette Medical Center
PeaceHealth Cottage Grove Community Hospital
PeaceHealth Peace Harbor Hospital
PeaceHealth Riverbend
PeaceHealth Sacred Heart Medical Center

Multnomah County

Legacy Emanuel Medical Center
Legacy Good Samaritan Medical Center
Legacy Mt. Hood Medical Center
Providence Portland Medical Center
Providence St. Vincent Medical Center
Randall Children's Hospital at Legacy Emanuel

Washington County

Legacy Meridian Park

Yamhill County

Providence Newberg Medical Center

Donor Centers

Bellevue Center

Bellingham Center

Central Seattle

Everett Center

Federal Way Center

Lynnwood Center

North Seattle Center

Olympia Center

Silverdale Center

Tukwila Center

Vancouver Center

Lane Blood Center



921 Terry Ave
Seattle, WA 98104
BloodworksNW.org

